

## LM140A/LM140/LM340A/LM340/LM7800C Series 3-Terminal Positive Regulators

### General Description

The LM140A/LM140/LM340A/LM340/LM7800C monolithic 3-terminal positive voltage regulators employ internal current-limiting, thermal shutdown and safe-area compensation, making them essentially indestructible. If adequate heat sinking is provided, they can deliver over 1.0A output current. They are intended as fixed voltage regulators in a wide range of applications including local (on-card) regulation for elimination of noise and distribution problems associated with single-point regulation. In addition to use as fixed voltage regulators, these devices can be used with external components to obtain adjustable output voltages and currents.

Considerable effort was expended to make the entire series of regulators easy to use and minimize the number of external components. It is not necessary to bypass the output, although this does improve transient response. Input bypassing is needed only if the regulator is located far from the filter capacitor of the power supply.

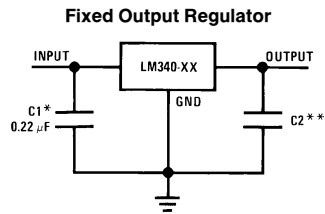
The 5V, 12V, and 15V regulator options are available in the steel TO-3 power package. The LM340A/LM340/LM7800C series is available in the TO-220 plastic power package, and the LM7805 and LM7812 are also available in the surface-mount TO-263 package.

### Features

- Complete specifications at 1A load
- Output voltage tolerances of  $\pm 2\%$  at  $T_j = 25^\circ\text{C}$  and  $\pm 4\%$  over the temperature range (LM140A/LM340A)
- Line regulation of 0.01% of  $V_{OUT}/V$  of  $\Delta V_{IN}$  at 1A load (LM140A/LM340A)
- Load regulation of 0.3% of  $V_{OUT}/A$  (LM140A/LM340A)
- Internal thermal overload protection
- Internal short-circuit current limit
- Output transistor safe area protection
- P<sup>+</sup> Product Enhancement tested

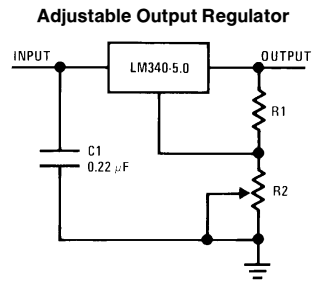
| Device       | Output Voltages            | Packages                                    |
|--------------|----------------------------|---|
| LM140A/LM140 | 5, 12, 15                  | TO-3 (K)                                    |
| LM340A/LM340 | 5, 12, 15                  | TO-3 (K), TO-220 (T)                        |
| LM7800C      | 5, 6, 8, 12, 15,<br>18, 24 | TO-220 (T), TO-263 (S)<br>(5V and 12V only) |

### Typical Applications

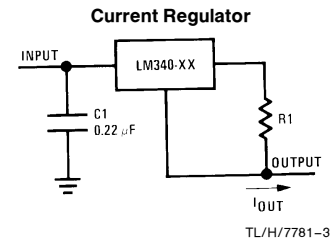


\*Required if the regulator is located far from the power supply filter.

\*\*Although no output capacitor is needed for stability, it does help transient response. (If needed, use 0.1  $\mu\text{F}$ , ceramic disc).



$V_{OUT} = 5V + (5V/R1 + I_Q) R2$   $5V/R1 > 3 I_Q$ ,  
load regulation ( $L_r$ )  $\approx [(R1 + R2)/R1]$  ( $L_r$  of LM340-5).



$$I_{OUT} = \frac{V_{2-3}}{R1} + I_Q$$

$$\Delta I_Q = 1.3 \text{ mA over line and load changes.}$$

## Absolute Maximum Ratings (Note 1)

If Military/Aerospace specified devices are required, please contact the National Semiconductor Sales Office/Distributors for availability and specifications. (Note 5)

|                                       |  |       |
|---------------------------------------|--|-------|
| DC Input Voltage                      | All Devices except LM7824/LM7824C      | 35V   |
|                                       | LM7824/LM7824C                         | 40V   |
| Internal Power Dissipation (Note 2)   | Internally Limited                     |       |
| Maximum Junction Temperature          | 150°C                                  |       |
| Storage Temperature Range             | -65°C to +150°C                        |       |
| Lead Temperature (Soldering, 10 sec.) |  |       |
|                                       | TO-3 Package (K)                       | 300°C |
|                                       | TO-220 Package (T), TO-263 Package (S) | 230°C |
| ESD Susceptibility (Note 3)           | 2 kV                                   |       |

## Operating Conditions (Note 1)

|  |  |                 |
|--|--|-----------------|
| Temperature Range (T <sub>A</sub> ) (Note 2) | LM140A, LM140                            | -55°C to +125°C |
|  | LM340A, LM340, LM7805C, LM7812C, LM7815C | 0°C to +70°C    |
|  | LM7806C, LM7808C, LM7818C, LM7824C       | 0°C to +125°C   |

## LM140A/LM340A

### Electrical Characteristics

I<sub>OUT</sub> = 1A, -55°C ≤ T<sub>J</sub> ≤ +150°C (LM140A), or 0°C ≤ T<sub>J</sub> ≤ +125°C (LM340A) unless otherwise specified (Note 4)

| Symbol                                | Output Voltage   |   | 5V                               |     |     | 12V                           |     |       | 15V                           |     |      | Units |
|---------------------------------------|--|---|----------------------------------|-----|-----|-------------------------------|-----|-------|-------------------------------|-----|------|-------|
|                                       | Input Voltage (unless otherwise noted)   |   | 10V                              |     |     | 19V                           |     |       | 23V                           |     |      |       |
|                                       | Parameter  | Conditions  | Min                              | Typ | Max | Min                           | Typ | Max   | Min                           | Typ | Max  |       |
| V <sub>O</sub>                        | Output Voltage   | T <sub>J</sub> = 25°C   | 4.9                              | 5   | 5.1 | 11.75                         | 12  | 12.25 | 14.7                          | 15  | 15.3 | V     |
|                                       |  | P <sub>D</sub> ≤ 15W, 5 mA ≤ I <sub>O</sub> ≤ 1A  | 4.8                              |     | 5.2 | 11.5                          |     | 12.5  | 14.4                          |     | 15.6 | V     |
|                                       |  | V <sub>MIN</sub> ≤ V <sub>IN</sub> ≤ V <sub>MAX</sub>   | (7.5 ≤ V <sub>IN</sub> ≤ 20)     |     |     | (14.8 ≤ V <sub>IN</sub> ≤ 27) |     |       | (17.9 ≤ V <sub>IN</sub> ≤ 30) |     |      | V     |
| ΔV <sub>O</sub>                       | Line Regulation  | I <sub>O</sub> = 500 mA   | 10                               |     |     | 18                            |     |       | 22                            |     |      | mV    |
|                                       |  | ΔV <sub>IN</sub>  | (7.5 ≤ V <sub>IN</sub> ≤ 20)     |     |     | (14.8 ≤ V <sub>IN</sub> ≤ 27) |     |       | (17.9 ≤ V <sub>IN</sub> ≤ 30) |     |      | V     |
|                                       |  | T <sub>J</sub> = 25°C   | 3 10                             |     |     | 4 18                          |     |       | 4 22                          |     |      | mV    |
|                                       |  | ΔV <sub>IN</sub>  | (7.5 ≤ V <sub>IN</sub> ≤ 20)     |     |     | (14.5 ≤ V <sub>IN</sub> ≤ 27) |     |       | (17.5 ≤ V <sub>IN</sub> ≤ 30) |     |      | V     |
| ΔV <sub>O</sub>                       | Load Regulation  | T <sub>J</sub> = 25°C   | 5 mA ≤ I <sub>O</sub> ≤ 1.5A     |     | 10  | 25                            | 12  | 32    | 12                            | 35  | mV   |       |
|                                       |  |   | 250 mA ≤ I <sub>O</sub> ≤ 750 mA |     |     | 15                            |     | 19    |                               | 21  | mV   |       |
|                                       |  | Over Temperature,<br>5 mA ≤ I <sub>O</sub> ≤ 1A   |                                  |     | 25  |                               | 60  |       | 75                            |     | mV   |       |
| I <sub>Q</sub>                        | Quiescent Current  | T <sub>J</sub> = 25°C   | 6                                |     |     | 6                             |     |       | 6                             |     |      | mA    |
|                                       |  | Over Temperature  | 6.5                              |     |     | 6.5                           |     |       | 6.5                           |     |      | mA    |
| ΔI <sub>Q</sub>                       | Quiescent Current Change   | 5 mA ≤ I <sub>O</sub> ≤ 1A  | 0.5                              |     |     | 0.5                           |     |       | 0.5                           |     |      | mA    |
|                                       |  | T <sub>J</sub> = 25°C, I <sub>O</sub> = 1A  | 0.8                              |     |     | 0.8                           |     |       | 0.8                           |     |      | mA    |
|                                       |  | V <sub>MIN</sub> ≤ V <sub>IN</sub> ≤ V <sub>MAX</sub>   | (7.5 ≤ V <sub>IN</sub> ≤ 20)     |     |     | (14.8 ≤ V <sub>IN</sub> ≤ 27) |     |       | (17.9 ≤ V <sub>IN</sub> ≤ 30) |     |      | V     |
| V <sub>N</sub>                        | Output Noise Voltage   | I <sub>O</sub> = 500 mA   | 0.8                              |     |     | 0.8                           |     |       | 0.8                           |     |      | mA    |
|                                       |  | V <sub>MIN</sub> ≤ V <sub>IN</sub> ≤ V <sub>MAX</sub>   | (8 ≤ V <sub>IN</sub> ≤ 25)       |     |     | (15 ≤ V <sub>IN</sub> ≤ 30)   |     |       | (17.9 ≤ V <sub>IN</sub> ≤ 30) |     |      | V     |
| ΔV <sub>IN</sub><br>ΔV <sub>OUT</sub> | Ripple Rejection   | T <sub>A</sub> = 25°C, 10 Hz ≤ f ≤ 100 kHz  | 40                               |     |     | 75                            |     |       | 90                            |     |      | μV    |
|                                       |  | T <sub>J</sub> = 25°C, f = 120 Hz, I <sub>O</sub> = 1A<br>or f = 120 Hz, I <sub>O</sub> = 500 mA,<br>Over Temperature,<br>V <sub>MIN</sub> ≤ V <sub>IN</sub> ≤ V <sub>MAX</sub> | 68                               | 80  | 68  | 61                            | 72  | 61    | 60                            | 70  | 60   | dB    |
| R <sub>O</sub>                        | Dropout Voltage<br>Output Resistance<br>Short-Circuit Current<br>Peak Output Current<br>Average TC of V <sub>O</sub> | T <sub>J</sub> = 25°C, I <sub>O</sub> = 1A  | 2.0                              |     |     | 2.0                           |     |       | 2.0                           |     |      | V     |
|                                       |  | f = 1 kHz   | 8                                |     |     | 18                            |     |       | 19                            |     |      | mΩ    |
|                                       |  | T <sub>J</sub> = 25°C   | 2.1                              |     |     | 1.5                           |     |       | 1.2                           |     |      | A     |
|                                       |  | T <sub>J</sub> = 25°C   | 2.4                              |     |     | 2.4                           |     |       | 2.4                           |     |      | A     |
|                                       |  | Min, T <sub>J</sub> = 0°C, I <sub>O</sub> = 5 mA  | -0.6                             |     |     | -1.5                          |     |       | -1.8                          |     |      | mV/°C |
| V <sub>IN</sub>                       | Input Voltage Required to Maintain Line Regulation   | T <sub>J</sub> = 25°C   | 7.5                              |     |     | 14.5                          |     |       | 17.5                          |     |      | V     |

# LM140

## Electrical Characteristics (Note 4) $-55^{\circ}\text{C} \leq T_J \leq +150^{\circ}\text{C}$ unless otherwise specified

| Symbol   | Output Voltage   |   | 5V  |   |      | 12V  |     |      | 15V   |     |       | Units   |          |
|--|--|---|---|---|------|------|-----|------|-------|-----|-------|---|----------|
|  | Input Voltage (unless otherwise noted)   |   | 10V   |   |      | 19V  |     |      | 23V   |     |       |   |          |
|  | Parameter  | Conditions  | Min   | Typ   | Max  | Min  | Typ | Max  | Min   | Typ | Max   |   |          |
| $V_O$  | Output Voltage   | $T_J = 25^{\circ}\text{C}, 5\text{ mA} \leq I_O \leq 1\text{ A}$  | 4.8   | 5   | 5.2  | 11.5 | 12  | 12.5 | 14.4  | 15  | 15.6  | V   |          |
|  |  | $P_D \leq 15\text{ W}, 5\text{ mA} \leq I_O \leq 1\text{ A}$<br>$V_{\text{MIN}} \leq V_{\text{IN}} \leq V_{\text{MAX}}$ | 4.75  |   | 5.25 | 11.4 |     | 12.6 | 14.25 |     | 15.75 | V<br>V  |          |
| $\Delta V_O$   | Line Regulation  | $I_O = 500\text{ mA}$   | $T_J = 25^{\circ}\text{C}$<br>$\Delta V_{\text{IN}}$  |   | 3    | 50   |     | 4    | 120   |     | 4     | 150   | mV<br>V  |
|  |  |   | $-55^{\circ}\text{C} \leq T_J \leq +150^{\circ}\text{C}$<br>$\Delta V_{\text{IN}}$  |   |      | 50   |     |      | 120   |     |       | 150   | mV<br>V  |
|  |  | $I_O \leq 1\text{ A}$   | $T_J = 25^{\circ}\text{C}$<br>$\Delta V_{\text{IN}}$  |   |      | 50   |     |      | 120   |     |       | 150   | mV<br>V  |
|  |  |   | $-55^{\circ}\text{C} \leq T_J \leq +150^{\circ}\text{C}$<br>$\Delta V_{\text{IN}}$  |   |      | 25   |     |      | 60    |     |       | 75  | mV<br>V  |
| $\Delta V_O$   | Load Regulation  | $T_J = 25^{\circ}\text{C}$<br>$5\text{ mA} \leq I_O \leq 1.5\text{ A}$<br>$250\text{ mA} \leq I_P \leq 750\text{ mA}$   |   | 10  | 50   |      | 12  | 120  |       | 12  | 150   | mV<br>mV  |          |
|  |  |   | $-55^{\circ}\text{C} \leq T_J \leq +150^{\circ}\text{C}$<br>$5\text{ mA} \leq I_O \leq 1\text{ A}$  |   |      | 50   |     |      | 120   |     |       | 150   | mV       |
| $I_Q$  | Quiescent Current  | $I_O \leq 1\text{ A}$   | $T_J = 25^{\circ}\text{C}$  |   | 6    |      |     | 6    |       |     | 6     | mA  |          |
|  |  |   | $-55^{\circ}\text{C} \leq T_J \leq +150^{\circ}\text{C}$  |   |      | 7    |     |      | 7     |     |       | 7   | mA       |
| $\Delta I_Q$   | Quiescent Current Change   | $5\text{ mA} \leq I_O \leq 1\text{ A}$  |   |   | 0.5  |      |     | 0.5  |       |     | 0.5   | mA  |          |
|  |  | $T_J = 25^{\circ}\text{C}, I_O \leq 1\text{ A}$<br>$V_{\text{MIN}} \leq V_{\text{IN}} \leq V_{\text{MAX}}$              |   |   | 0.8  |      |     | 0.8  |       |     | 0.8   | mA  |          |
|  |  |   | $I_O = 500\text{ mA}, -55^{\circ}\text{C} \leq T_J \leq +150^{\circ}\text{C}$<br>$V_{\text{MIN}} \leq V_{\text{IN}} \leq V_{\text{MAX}}$    |   |      | 0.8  |     |      | 0.8   |     |       | 0.8   | mA       |
| $V_N$  | Output Noise Voltage   | $T_A = 25^{\circ}\text{C}, 10\text{ Hz} \leq f \leq 100\text{ kHz}$   |   |   | 40   |      |     | 75   |       |     | 90    | $\mu\text{V}$                                       |          |
| $\frac{\Delta V_{\text{IN}}}{\Delta V_{\text{OUT}}}$ | Ripple Rejection   | $f = 120\text{ Hz}$   | $I_O \leq 1\text{ A}, T_J = 25^{\circ}\text{C}$ or<br>$I_O \leq 500\text{ mA},$<br>$-55^{\circ}\text{C} \leq T_J \leq +150^{\circ}\text{C}$ |   | 68   | 80   |     | 61   | 72    |     | 60    | 70  | dB<br>dB |
|  |  |   |   | $V_{\text{MIN}} \leq V_{\text{IN}} \leq V_{\text{MAX}}$ |      |      | 68  |      |       | 61  |       |   | 60       |
| $R_O$  | Dropout Voltage<br>Output Resistance<br>Short-Circuit Current<br>Peak Output Current<br>Average TC of $V_{\text{OUT}}$ | $T_J = 25^{\circ}\text{C}, I_O = 1\text{ A}$  |   |   | 2.0  |      |     | 2.0  |       |     | 2.0   | V<br>m $\Omega$<br>A<br>A<br>mV/ $^{\circ}\text{C}$ |          |
|  |  | $f = 1\text{ kHz}$  |   |   |      | 8    |     |      | 18    |     |       | 19  |          |
|  |  | $T_J = 25^{\circ}\text{C}$  |   |   |      | 2.1  |     |      | 1.5   |     |       | 1.2   |          |
|  |  | $T_J = 25^{\circ}\text{C}$  |   |   |      | 2.4  |     |      | 2.4   |     |       | 2.4   |          |
|  |  | $0^{\circ}\text{C} \leq T_J \leq +150^{\circ}\text{C}, I_O = 5\text{ mA}$   |   |   |      | -0.6 |     |      | -1.5  |     |       | -1.8  |          |
| $V_{\text{IN}}$                                      | Input Voltage Required to Maintain Line Regulation   | $T_J = 25^{\circ}\text{C}, I_O \leq 1\text{ A}$   |   |   | 7.5  |      |     | 14.6 |       |     | 17.7  | V   |          |

# LM340/LM7800C

## Electrical Characteristics (Note 4) $0^{\circ}\text{C} \leq T_J \leq +125^{\circ}\text{C}$ unless otherwise specified

| Symbol   | Output Voltage                                     |  | 5V  |                                     |      | 12V                                  |                                      |      | 15V                                  |  |                              | Units |
|--|--|--|---|-------------------------------------|------|--------------------------------------|--------------------------------------|------|--------------------------------------|--|------------------------------|-------|
|  | Input Voltage (unless otherwise noted)             |  | 10V   |                                     |      | 19V                                  |                                      |      | 23V                                  |  |                              |       |
|  | Parameter  | Conditions   | Min   | Typ                                 | Max  | Min                                  | Typ                                  | Max  | Min                                  | Typ                                    | Max                          |       |
| $V_O$  | Output Voltage                                     | $T_J = 25^{\circ}\text{C}, 5\text{ mA} \leq I_O \leq 1\text{ A}$                             | 4.8   | 5                                   | 5.2  | 11.5                                 | 12                                   | 12.5 | 14.4                                 | 15                                     | 15.6                         | V     |
|  |  | $P_D \leq 15\text{ W}, 5\text{ mA} \leq I_O \leq 1\text{ A}$                                 | 4.75  |                                     | 5.25 | 11.4                                 |                                      | 12.6 | 14.25                                |  | 15.75                        | V     |
|  |  | $V_{\text{MIN}} \leq V_{\text{IN}} \leq V_{\text{MAX}}$                                      | (7.5 $\leq V_{\text{IN}} \leq 20$ )   |                                     |      |                                      | (14.5 $\leq V_{\text{IN}} \leq 27$ ) |      |                                      | (17.5 $\leq V_{\text{IN}} \leq 30$ )   |                              | V     |
| $\Delta V_O$   | Line Regulation                                    | $I_O = 500\text{ mA}$  | $T_J = 25^{\circ}\text{C}$  | 3                                   | 50   | 4                                    | 120                                  | 4    | 150                                  |  |                              | mV    |
|  |  |  | $\Delta V_{\text{IN}}$  | (7 $\leq V_{\text{IN}} \leq 25$ )   |      |                                      | (14.5 $\leq V_{\text{IN}} \leq 30$ ) |      |                                      | (17.5 $\leq V_{\text{IN}} \leq 30$ )   |                              | V     |
|  |  |  | $0^{\circ}\text{C} \leq T_J \leq +125^{\circ}\text{C}$  |                                     | 50   |                                      | 120                                  |      | 150                                  |  |                              | mV    |
|  |  | $I_O \leq 1\text{ A}$  | $T_J = 25^{\circ}\text{C}$  |                                     | 50   |                                      | 120                                  |      | 150                                  |  |                              | mV    |
|  |  |  | $\Delta V_{\text{IN}}$  | (7.5 $\leq V_{\text{IN}} \leq 20$ ) |      |                                      | (14.6 $\leq V_{\text{IN}} \leq 27$ ) |      |                                      | (17.7 $\leq V_{\text{IN}} \leq 30$ )   |                              | V     |
|  |  |  | $0^{\circ}\text{C} \leq T_J \leq +125^{\circ}\text{C}$  |                                     | 25   |                                      | 60                                   |      | 75                                   |  |                              | mV    |
| $\Delta V_O$   | Load Regulation                                    | $T_J = 25^{\circ}\text{C}$   | $5\text{ mA} \leq I_O \leq 1.5\text{ A}$  | 10                                  | 50   | 12                                   | 120                                  | 12   | 150                                  |  |                              | mV    |
|  |  |  | $250\text{ mA} \leq I_O \leq 750\text{ mA}$   |                                     | 25   |                                      | 60                                   |      | 75                                   |  |                              | mV    |
|  |  | $5\text{ mA} \leq I_O \leq 1\text{ A}, 0^{\circ}\text{C} \leq T_J \leq +125^{\circ}\text{C}$ |   | 50                                  |      | 120                                  |                                      | 150  |                                      |  | mV                           |       |
| $I_Q$  | Quiescent Current                                  | $I_O \leq 1\text{ A}$  | $T_J = 25^{\circ}\text{C}$  | 8                                   |      | 8                                    |                                      | 8    |                                      |  | mA                           |       |
|  |  |  | $0^{\circ}\text{C} \leq T_J \leq +125^{\circ}\text{C}$  |                                     | 8.5  |                                      | 8.5                                  |      | 8.5                                  |  |                              | mA    |
| $\Delta I_Q$   | Quiescent Current Change                           | $5\text{ mA} \leq I_O \leq 1\text{ A}$   |   |                                     | 0.5  |                                      | 0.5                                  |      | 0.5                                  |  | mA                           |       |
|  |  | $T_J = 25^{\circ}\text{C}, I_O \leq 1\text{ A}$  | $V_{\text{MIN}} \leq V_{\text{IN}} \leq V_{\text{MAX}}$   |                                     | 1.0  |                                      | 1.0                                  |      | 1.0                                  |  | mA                           |       |
|  |  |  |   | (7.5 $\leq V_{\text{IN}} \leq 20$ ) |      |                                      | (14.8 $\leq V_{\text{IN}} \leq 27$ ) |      |                                      | (17.9 $\leq V_{\text{IN}} \leq 30$ )   |                              | V     |
|  |  | $I_O \leq 500\text{ mA}, 0^{\circ}\text{C} \leq T_J \leq +125^{\circ}\text{C}$               |   |                                     | 1.0  |                                      | 1.0                                  |      | 1.0                                  |  |                              | mA    |
|  |  | $V_{\text{MIN}} \leq V_{\text{IN}} \leq V_{\text{MAX}}$                                      | (7 $\leq V_{\text{IN}} \leq 25$ )   |                                     |      | (14.5 $\leq V_{\text{IN}} \leq 30$ ) |                                      |      | (17.5 $\leq V_{\text{IN}} \leq 30$ ) |  | V                            |       |
| $V_N$  | Output Noise Voltage                               | $T_A = 25^{\circ}\text{C}, 10\text{ Hz} \leq f \leq 100\text{ kHz}$                          |   | 40                                  |      | 75                                   |                                      | 90   |                                      |  | $\mu\text{V}$                |       |
| $\frac{\Delta V_{\text{IN}}}{\Delta V_{\text{OUT}}}$ | Ripple Rejection                                   | $f = 120\text{ Hz}$  | $\begin{cases} I_O \leq 1\text{ A}, T_J = 25^{\circ}\text{C} \\ \text{or } I_O \leq 500\text{ mA}, \\ 0^{\circ}\text{C} \leq T_J \leq +125^{\circ}\text{C} \end{cases}$ | 62                                  | 80   | 55                                   | 72                                   | 54   | 70                                   |  |                              | dB    |
|  |  |  |   | (8 $\leq V_{\text{IN}} \leq 18$ )   |      |                                      | (15 $\leq V_{\text{IN}} \leq 25$ )   |      |                                      | (18.5 $\leq V_{\text{IN}} \leq 28.5$ ) |                              |       |
| $R_O$  | Dropout Voltage                                    | $T_J = 25^{\circ}\text{C}, I_O = 1\text{ A}$   |   | 2.0                                 |      | 2.0                                  |                                      | 2.0  |                                      |  | V                            |       |
|  | Output Resistance                                  | $f = 1\text{ kHz}$   |   | 8                                   |      | 18                                   |                                      | 19   |                                      |  | $\text{m}\Omega$             |       |
|  | Short-Circuit Current                              | $T_J = 25^{\circ}\text{C}$   |   | 2.1                                 |      | 1.5                                  |                                      | 1.2  |                                      |  | A                            |       |
|  | Peak Output Current                                | $T_J = 25^{\circ}\text{C}$   |   | 2.4                                 |      | 2.4                                  |                                      | 2.4  |                                      |  | A                            |       |
|  | Average TC of $V_{\text{OUT}}$                     | $0^{\circ}\text{C} \leq T_J \leq +125^{\circ}\text{C}, I_O = 5\text{ mA}$                    |   | -0.6                                |      | -1.5                                 |                                      | -1.8 |                                      |  | $\text{mV}/^{\circ}\text{C}$ |       |
| $V_{\text{IN}}$                                      | Input Voltage Required to Maintain Line Regulation | $T_J = 25^{\circ}\text{C}, I_O \leq 1\text{ A}$  |   | 7.5                                 |      | 14.6                                 |                                      | 17.7 |                                      |  | V                            |       |

**Note 1:** Absolute Maximum Ratings are limits beyond which damage to the device may occur. Operating Conditions are conditions under which the device functions but the specifications might not be guaranteed. For guaranteed specifications and test conditions see the Electrical Characteristics.

**Note 2:** The maximum allowable power dissipation at any ambient temperature is a function of the maximum junction temperature for operation ( $T_{\text{JMAX}} = 125^{\circ}\text{C}$  or  $150^{\circ}\text{C}$ ), the junction-to-ambient thermal resistance ( $\theta_{\text{JA}}$ ), and the ambient temperature ( $T_A$ ).  $P_{\text{DMAX}} = (T_{\text{JMAX}} - T_A)/\theta_{\text{JA}}$ . If this dissipation is exceeded, the die temperature will rise above  $T_{\text{JMAX}}$  and the electrical specifications do not apply. If the die temperature rises above  $150^{\circ}\text{C}$ , the device will go into thermal shutdown. For the TO-3 package (K, KC), the junction-to-ambient thermal resistance ( $\theta_{\text{JA}}$ ) is  $39^{\circ}\text{C}/\text{W}$ . When using a heatsink,  $\theta_{\text{JA}}$  is the sum of the  $4^{\circ}\text{C}/\text{W}$  junction-to-case thermal resistance ( $\theta_{\text{JC}}$ ) of the TO-3 package and the case-to-ambient thermal resistance of the heatsink. For the TO-220 package (T),  $\theta_{\text{JA}}$  is  $54^{\circ}\text{C}/\text{W}$  and  $\theta_{\text{JC}}$  is  $4^{\circ}\text{C}/\text{W}$ .

If the TO-263 package is used, the thermal resistance can be reduced by increasing the PC board copper area thermally connected to the package: Using 0.5 square inches of copper area,  $\theta_{\text{JA}}$  is  $50^{\circ}\text{C}/\text{W}$ ; with 1 square inch of copper area,  $\theta_{\text{JA}}$  is  $37^{\circ}\text{C}/\text{W}$ ; and with 1.6 or more inches of copper area,  $\theta_{\text{JA}}$  is  $32^{\circ}\text{C}/\text{W}$ .

**Note 3:** ESD rating is based on the human body model, 100 pF discharged through 1.5 k $\Omega$ .

**Note 4:** All characteristics are measured with a 0.22  $\mu\text{F}$  capacitor from input to ground and a 0.1  $\mu\text{F}$  capacitor from output to ground. All characteristics except noise voltage and ripple rejection ratio are measured using pulse techniques ( $t_w \leq 10\text{ ms}$ , duty cycle  $\leq 5\%$ ). Output voltage changes due to changes in internal temperature must be taken into account separately.

**Note 5:** A military RETS specification is available on request. At the time of printing, the military RETS specifications for the LM140AK-5.0/883, LM140AK-12/883, and LM140AK-15/883 complied with the min and max limits for the respective versions of the LM140A. At the time of printing, the military RETS specifications for the LM140K-5.0/883, LM140K-12/883, and LM140K-15/883 complied with the min and max limits for the respective versions of the LM140. The LM140H/883, LM140K/883, and LM140AK/883 may also be procured as a Standard Military Drawing.

## LM7806C Electrical Characteristics

$0^{\circ}\text{C} \leq T_J \leq +150^{\circ}\text{C}$ ,  $V_I = 11\text{V}$ ,  $I_O = 500\text{ mA}$ ,  $C_I = 0.33\ \mu\text{F}$ ,  $C_O = 0.1\ \mu\text{F}$ , unless otherwise specified

| Symbol                  | Parameter   | Conditions (Note 4)  | LM7806C |   |   | Units                        |    |
|-------------------------|---|--|---------|---|---|------------------------------|----|
|                         |   |  | Min     | Typ   | Max                                       |                              |    |
| $V_O$                   | Output Voltage                                    | $T_J = 25^{\circ}\text{C}$   | 5.75    | 6.0   | 6.25                                      | V                            |    |
| $\Delta V_O$            | Line Regulation                                   | $T_J = 25^{\circ}\text{C}$   |         | $8.0\text{V} \leq V_I \leq 25\text{V}$      | 5.0                                       | 120                          | mV |
|                         |   |  |         | $9.0\text{V} \leq V_I \leq 13\text{V}$      | 1.5                                       | 60                           |    |
| $\Delta V_O$            | Load Regulation                                   | $T_J = 25^{\circ}\text{C}$   |         | $5.0\text{ mA} \leq I_O \leq 1.5\text{A}$   | 14  | 120                          | mV |
|                         |   |  |         | $250\text{ mA} \leq I_O \leq 750\text{ mA}$ | 4.0                                       | 60                           |    |
| $V_O$                   | Output Voltage                                    | $8.0\text{V} \leq V_I \leq 21\text{V}$ , $5.0\text{ mA} \leq I_O \leq 1.0\text{A}$ , $P \leq 15\text{W}$ | 5.7     |   | 6.3                                       | V                            |    |
| $I_Q$                   | Quiescent Current                                 | $T_J = 25^{\circ}\text{C}$   |         | 4.3   | 8.0                                       | mA                           |    |
| $\Delta I_Q$            | Quiescent Current Change                          |  |         | With Line                                   |   | 1.3                          | mA |
|                         |   |  |         | With Load                                   | $5.0\text{ mA} \leq I_O \leq 1.0\text{A}$ |                              |    |
| $V_N$                   | Noise   | $T_A = 25^{\circ}\text{C}$ , $10\text{ Hz} \leq f \leq 100\text{ kHz}$                                   |         | 45  |   | $\mu\text{V}$                |    |
| $\Delta V_I/\Delta V_O$ | Ripple Rejection                                  | $f = 120\text{ Hz}$ , $I_O = 350\text{ mA}$ , $T_J = 25^{\circ}\text{C}$                                 | 59      | 75  |   | dB                           |    |
| $V_{DO}$                | Dropout Voltage                                   | $I_O = 1.0\text{A}$ , $T_J = 25^{\circ}\text{C}$   |         | 2.0   |   | V                            |    |
| $R_O$                   | Output Resistance                                 | $f = 1.0\text{ kHz}$   |         | 9   |   | $\text{m}\Omega$             |    |
| $I_{OS}$                | Output Short Circuit Current                      | $T_J = 25^{\circ}\text{C}$ , $V_I = 35\text{V}$  |         | 550   |   | mA                           |    |
| $I_{PK}$                | Peak Output Current                               | $T_J = 25^{\circ}\text{C}$   |         | 2.2   |   | A                            |    |
| $\Delta V_O/\Delta T$   | Average Temperature Coefficient of Output Voltage | $I_O = 5.0\text{ mA}$ , $0^{\circ}\text{C} \leq T_A \leq +125^{\circ}\text{C}$                           |         | 0.8   |   | $\text{mV}/^{\circ}\text{C}$ |    |

## LM7808C Electrical Characteristics

$0^{\circ}\text{C} \leq T_J \leq +150^{\circ}\text{C}$ ,  $V_I = 14\text{V}$ ,  $I_O = 500\text{ mA}$ ,  $C_I = 0.33\ \mu\text{F}$ ,  $C_O = 0.1\ \mu\text{F}$ , unless otherwise specified

| Symbol                  | Parameter   | Conditions (Note 4)   | LM7808C |   |   | Units                        |    |
|-------------------------|---|---|---------|---|---|------------------------------|----|
|                         |   |   | Min     | Typ   | Max                                       |                              |    |
| $V_O$                   | Output Voltage                                    | $T_J = 25^{\circ}\text{C}$  | 7.7     | 8.0   | 8.3                                       | V                            |    |
| $\Delta V_O$            | Line Regulation                                   | $T_J = 25^{\circ}\text{C}$  |         | $10.5\text{V} \leq V_I \leq 25\text{V}$     | 6.0                                       | 160                          | mV |
|                         |   |   |         | $11.0\text{V} \leq V_I \leq 17\text{V}$     | 2.0                                       | 80                           |    |
| $\Delta V_O$            | Load Regulation                                   | $T_J = 25^{\circ}\text{C}$  |         | $5.0\text{ mA} \leq I_O \leq 1.5\text{A}$   | 12  | 160                          | mV |
|                         |   |   |         | $250\text{ mA} \leq I_O \leq 750\text{ mA}$ | 4.0                                       | 80                           |    |
| $V_O$                   | Output Voltage                                    | $11.5\text{V} \leq V_I \leq 23\text{V}$ , $5.0\text{ mA} \leq I_O \leq 1.0\text{A}$ , $P \leq 15\text{W}$ | 7.6     |   | 8.4                                       | V                            |    |
| $I_Q$                   | Quiescent Current                                 | $T_J = 25^{\circ}\text{C}$  |         | 4.3   | 8.0                                       | mA                           |    |
| $\Delta I_Q$            | Quiescent Current Change                          |   |         | With Line                                   |   | 1.0                          | mA |
|                         |   |   |         | With Load                                   | $5.0\text{ mA} \leq I_O \leq 1.0\text{A}$ |                              |    |
| $V_N$                   | Noise   | $T_A = 25^{\circ}\text{C}$ , $10\text{ Hz} \leq f \leq 100\text{ kHz}$                                    |         | 52  |   | $\mu\text{V}$                |    |
| $\Delta V_I/\Delta V_O$ | Ripple Rejection                                  | $f = 120\text{ Hz}$ , $I_O = 350\text{ mA}$ , $T_J = 25^{\circ}\text{C}$                                  | 56      | 72  |   | dB                           |    |
| $V_{DO}$                | Dropout Voltage                                   | $I_O = 1.0\text{A}$ , $T_J = 25^{\circ}\text{C}$  |         | 2.0   |   | V                            |    |
| $R_O$                   | Output Resistance                                 | $f = 1.0\text{ kHz}$  |         | 16  |   | $\text{m}\Omega$             |    |
| $I_{OS}$                | Output Short Circuit Current                      | $T_J = 25^{\circ}\text{C}$ , $V_I = 35\text{V}$   |         | 0.45  |   | A                            |    |
| $I_{PK}$                | Peak Output Current                               | $T_J = 25^{\circ}\text{C}$  |         | 2.2   |   | A                            |    |
| $\Delta V_O/\Delta T$   | Average Temperature Coefficient of Output Voltage | $I_O = 5.0\text{ mA}$   |         | 0.8   |   | $\text{mV}/^{\circ}\text{C}$ |    |

**Note 4:** All characteristics are measured with a  $0.22\ \mu\text{F}$  capacitor from input to ground and a  $0.1\ \mu\text{F}$  capacitor from output to ground. All characteristics except noise voltage and ripple rejection ratio are measured using pulse techniques ( $t_w \leq 10\text{ ms}$ , duty cycle  $\leq 5\%$ ). Output voltage changes due to changes in internal temperature must be taken into account separately.

## LM7818C

### Electrical Characteristics

0°C ≤ T<sub>J</sub> ≤ +150°C, V<sub>I</sub> = 27V, I<sub>O</sub> = 500 mA, C<sub>I</sub> = 0.33 μF, C<sub>O</sub> = 0.1 μF, unless otherwise specified

| Symbol                           | Parameter   | Conditions (Note 4)   |                                  | LM7818C |      |      | Units |
|----------------------------------|---|---|----------------------------------|---------|------|------|-------|
|                                  |   |   |                                  | Min     | Typ  | Max  |       |
| V <sub>O</sub>                   | Output Voltage                                    | T <sub>J</sub> = 25°C   |                                  | 17.3    | 18.0 | 18.7 | V     |
| ΔV <sub>O</sub>                  | Line Regulation                                   | T <sub>J</sub> = 25°C   | 21V ≤ V <sub>I</sub> ≤ 33V       |         | 15   | 360  | mV    |
|                                  |   |   | 24V ≤ V <sub>I</sub> ≤ 30V       |         | 5.0  | 180  |       |
| ΔV <sub>O</sub>                  | Load Regulation                                   | T <sub>J</sub> = 25°C   | 5.0 mA ≤ I <sub>O</sub> ≤ 1.5A   |         | 12   | 360  | mV    |
|                                  |   |   | 250 mA ≤ I <sub>O</sub> ≤ 750 mA |         | 4.0  | 180  |       |
| V <sub>O</sub>                   | Output Voltage                                    | 22V ≤ V <sub>I</sub> ≤ 33V, 5.0 mA ≤ I <sub>O</sub> ≤ 1.0A, P ≤ 15W |                                  | 17.1    |      | 18.9 | V     |
| I <sub>Q</sub>                   | Quiescent Current                                 | T <sub>J</sub> = 25°C   |                                  |         | 4.5  | 8.0  | mA    |
| ΔI <sub>Q</sub>                  | Quiescent Current Change                          | With Line   | 22V ≤ V <sub>I</sub> ≤ 33V       |         |      | 1.0  | mA    |
|                                  |   | With Load   | 5.0 mA ≤ I <sub>O</sub> ≤ 1.0A   |         |      | 0.5  |       |
| V <sub>N</sub>                   | Noise   | T <sub>A</sub> = 25°C, 10 Hz ≤ f ≤ 100 kHz                          |                                  |         | 110  |      | μV    |
| ΔV <sub>I</sub> /ΔV <sub>O</sub> | Ripple Rejection                                  | f = 120 Hz, I <sub>O</sub> = 350 mA, T <sub>J</sub> = 25°C          |                                  | 53      | 69   |      | dB    |
| V <sub>DO</sub>                  | Dropout Voltage                                   | I <sub>O</sub> = 1.0A, T <sub>J</sub> = 25°C                        |                                  |         | 2.0  |      | V     |
| R <sub>O</sub>                   | Output Resistance                                 | f = 1.0 kHz   |                                  |         | 22   |      | mΩ    |
| I <sub>OS</sub>                  | Output Short Circuit Current                      | T <sub>J</sub> = 25°C, V <sub>I</sub> = 35V                         |                                  |         | 0.20 |      | A     |
| I <sub>PK</sub>                  | Peak Output Current                               | T <sub>J</sub> = 25°C   |                                  |         | 2.1  |      | A     |
| ΔV <sub>O</sub> /ΔT              | Average Temperature Coefficient of Output Voltage | I <sub>O</sub> = 5.0 mA   |                                  |         | 1.0  |      | mV/°C |

## LM7824C

### Electrical Characteristics

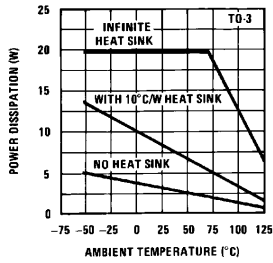
0°C ≤ T<sub>J</sub> ≤ +150°C, V<sub>I</sub> = 33V, I<sub>O</sub> = 500 mA, C<sub>I</sub> = 0.33 μF, C<sub>O</sub> = 0.1 μF, unless otherwise specified

| Symbol                           | Parameter   | Conditions (Note 4)   |                                  | LM7824C |      |      | Units |
|----------------------------------|---|---|----------------------------------|---------|------|------|-------|
|                                  |   |   |                                  | Min     | Typ  | Max  |       |
| V <sub>O</sub>                   | Output Voltage                                    | T <sub>J</sub> = 25°C   |                                  | 23.0    | 24.0 | 25.0 | V     |
| ΔV <sub>O</sub>                  | Line Regulation                                   | T <sub>J</sub> = 25°C   | 27V ≤ V <sub>I</sub> ≤ 38V       |         | 18   | 480  | mV    |
|                                  |   |   | 30V ≤ V <sub>I</sub> ≤ 36V       |         | 6.0  | 240  |       |
| ΔV <sub>O</sub>                  | Load Regulation                                   | T <sub>J</sub> = 25°C   | 5.0 mA ≤ I <sub>O</sub> ≤ 1.5A   |         | 12   | 480  | mV    |
|                                  |   |   | 250 mA ≤ I <sub>O</sub> ≤ 750 mA |         | 4.0  | 240  |       |
| V <sub>O</sub>                   | Output Voltage                                    | 28V ≤ V <sub>I</sub> ≤ 38V, 5.0 mA ≤ I <sub>O</sub> ≤ 1.0A, P ≤ 15W |                                  | 22.8    |      | 25.2 | V     |
| I <sub>Q</sub>                   | Quiescent Current                                 | T <sub>J</sub> = 25°C   |                                  |         | 4.6  | 8.0  | mA    |
| ΔI <sub>Q</sub>                  | Quiescent Current Change                          | With Line   | 28V ≤ V <sub>I</sub> ≤ 38V       |         |      | 1.0  | mA    |
|                                  |   | With Load   | 5.0 mA ≤ I <sub>O</sub> ≤ 1.0A   |         |      | 0.5  |       |
| V <sub>N</sub>                   | Noise   | T <sub>A</sub> = 25°C, 10 Hz ≤ f ≤ 100 kHz                          |                                  |         | 170  |      | μV    |
| ΔV <sub>I</sub> /ΔV <sub>O</sub> | Ripple Rejection                                  | f = 120 Hz, I <sub>O</sub> = 350 mA, T <sub>J</sub> = 25°C          |                                  | 50      | 66   |      | dB    |
| V <sub>DO</sub>                  | Dropout Voltage                                   | I <sub>O</sub> = 1.0A, T <sub>J</sub> = 25°C                        |                                  |         | 2.0  |      | V     |
| R <sub>O</sub>                   | Output Resistance                                 | f = 1.0 kHz   |                                  |         | 28   |      | mΩ    |
| I <sub>OS</sub>                  | Output Short Circuit Current                      | T <sub>J</sub> = 25°C, V <sub>I</sub> = 35V                         |                                  |         | 0.15 |      | A     |
| I <sub>PK</sub>                  | Peak Output Current                               | T <sub>J</sub> = 25°C   |                                  |         | 2.1  |      | A     |
| ΔV <sub>O</sub> /ΔT              | Average Temperature Coefficient of Output Voltage | I <sub>O</sub> = 5.0 mA   |                                  |         | 1.5  |      | mV/°C |

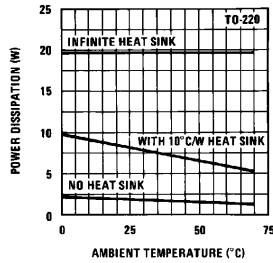
**Note 4:** All characteristics are measured with a 0.22 μF capacitor from input to ground and a 0.1 μF capacitor from output to ground. All characteristics except noise voltage and ripple rejection ratio are measured using pulse techniques (t<sub>w</sub> ≤ 10 ms, duty cycle ≤ 5%). Output voltage changes due to changes in internal temperature must be taken into account separately.

# Typical Performance Characteristics

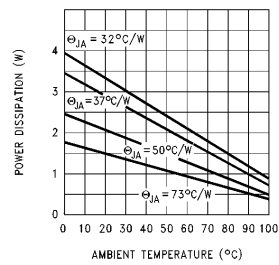
**Maximum Average Power Dissipation**



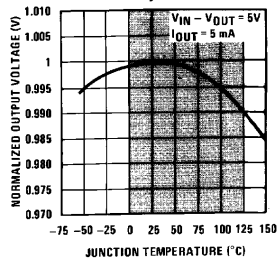
**Maximum Average Power Dissipation**



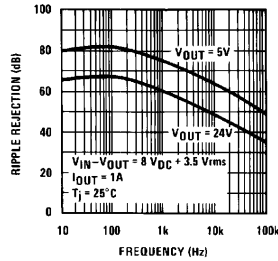
**Maximum Power Dissipation (TO-263)**  
(See Note 2)



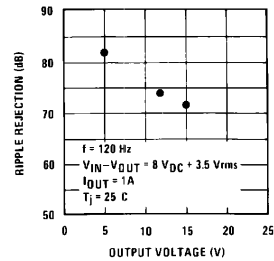
**Output Voltage (Normalized to 1V at Tj = 25°C)**



**Ripple Rejection**

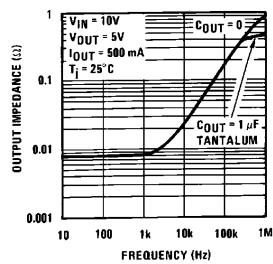


**Ripple Rejection**

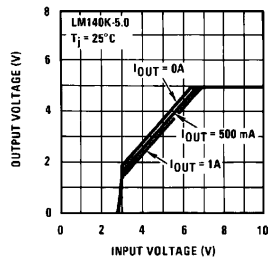


Note: Shaded area refers to LM340A/LM340, LM7805C, LM7812C and LM7815C.

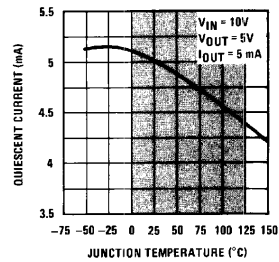
**Output Impedance**



**Dropout Characteristics**

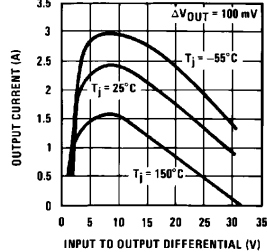


**Quiescent Current**

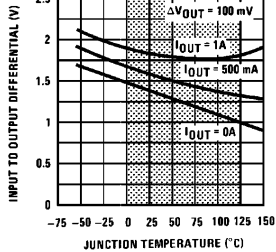


Note: Shaded area refers to LM340A/LM340, LM7805C, LM7812C and LM7815C.

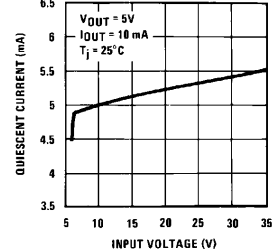
**Peak Output Current**



**Dropout Voltage**



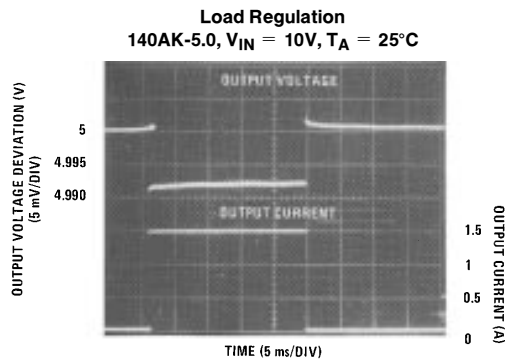
**Quiescent Current**



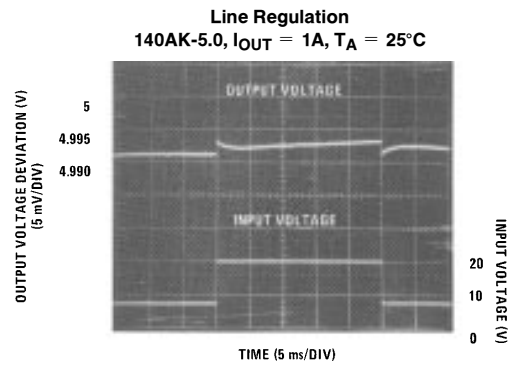
Note: Shaded area refers to LM340A/LM340, LM7805C, LM7812C and LM7815C.

TL/H/7781-4

## Typical Performance Characteristics (Continued)

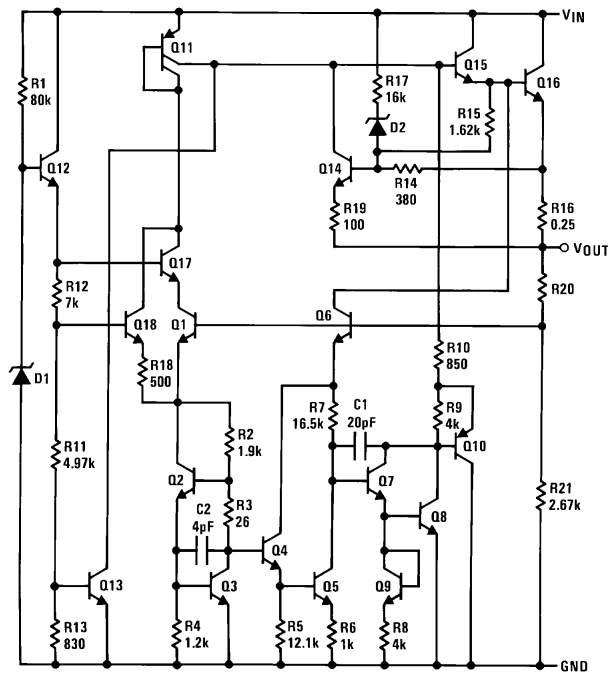


TL/H/7781-5



TL/H/7781-6

## Equivalent Schematic



TL/H/7781-7



## Application Hints

The LM340/LM78XX series is designed with thermal protection, output short-circuit protection and output transistor safe area protection. However, as with *any* IC regulator, it becomes necessary to take precautions to assure that the regulator is not inadvertently damaged. The following describes possible misapplications and methods to prevent damage to the regulator.

**Shorting the Regulator Input:** When using large capacitors at the output of these regulators, a protection diode connected input to output (*Figure 1*) may be required if the input is shorted to ground. Without the protection diode, an input short will cause the input to rapidly approach ground potential, while the output remains near the initial  $V_{OUT}$  because of the stored charge in the large output capacitor. The capacitor will then discharge through a large internal input to output diode and parasitic transistors. If the energy released by the capacitor is large enough, this diode, low current metal and the regulator will be destroyed. The fast diode in *Figure 1* will shunt most of the capacitors discharge current around the regulator. Generally no protection diode is required for values of output capacitance  $\leq 10 \mu\text{F}$ .

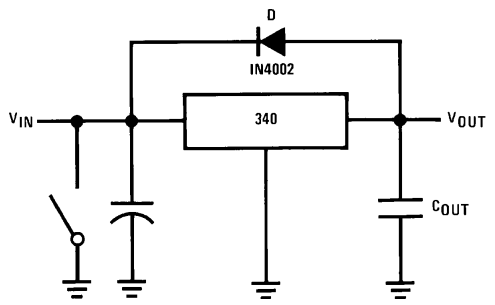


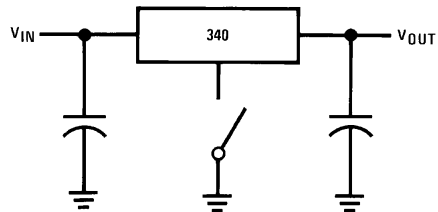
FIGURE 1. Input Short

TL/H/7781-8

**Raising the Output Voltage above the Input Voltage:** Since the output of the device does not sink current, forcing the output high can cause damage to internal low current paths in a manner similar to that just described in the "Shorting the Regulator Input" section.

**Regulator Floating Ground (*Figure 2*):** When the ground pin alone becomes disconnected, the output approaches the unregulated input, causing possible damage to other circuits connected to  $V_{OUT}$ . If ground is reconnected with power "ON", damage may also occur to the regulator. This fault is most likely to occur when plugging in regulators or modules with on card regulators into powered up sockets. Power should be turned off first, thermal limit ceases operating, or ground should be connected first if power must be left on.

**Transient Voltages:** If transients exceed the maximum rated input voltage of the device, or reach more than 0.8V below ground and have sufficient energy, they will damage the regulator. The solution is to use a large input capacitor, a series input breakdown diode, a choke, a transient suppressor or a combination of these.



TL/H/7781-9

FIGURE 2. Regulator Floating Ground

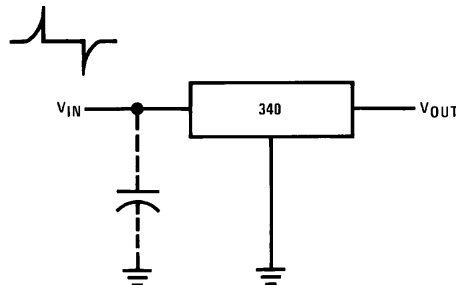
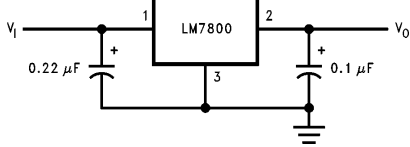


FIGURE 3. Transients

TL/H/7781-10

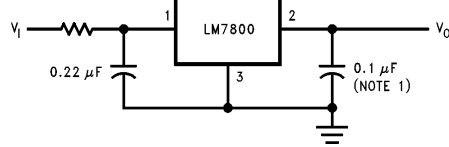
## Typical Applications

### Fixed Output Regulator



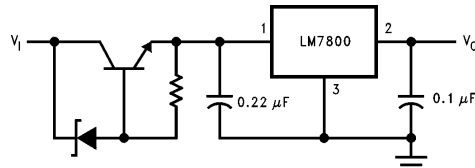
TL/H/7781-13

### High Input Voltage Circuits



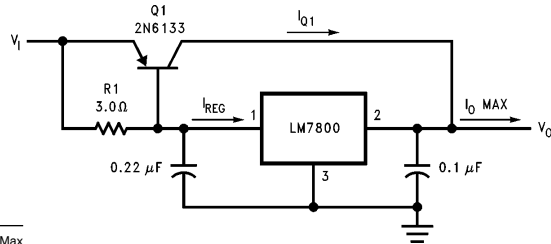
TL/H/7781-14

**Note 1:** Bypass capacitors are recommended for optimum stability and transient response, and should be located as close as possible to the regulator.



TL/H/7781-15

### High Current Voltage Regulator

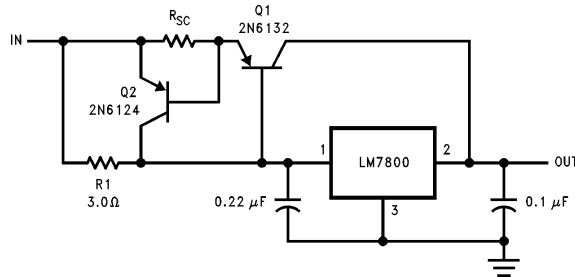


$$\beta(Q1) \geq \frac{I_{O \text{ Max}}}{I_{REG \text{ Max}}}$$

$$R1 = \frac{0.9}{I_{REG}} = \frac{\beta(Q1) V_{BE(Q1)}}{I_{REG \text{ Max}} (\beta + 1) - I_{O \text{ Max}}}$$

TL/H/7781-16

### High Output Current, Short Circuit Protected

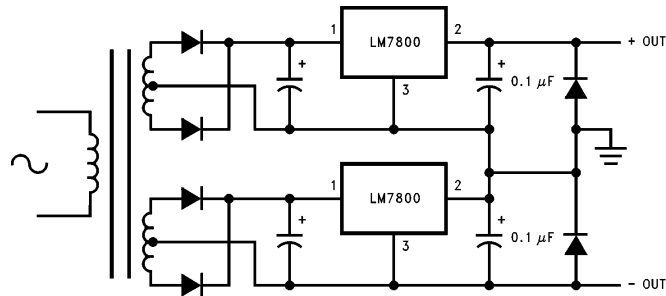


$$R_{SC} = \frac{0.8}{I_{SC}}$$

$$R1 = \frac{\beta V_{BE(Q1)}}{I_{REG \text{ Max}} (\beta + 1) - I_{O \text{ Max}}}$$

TL/H/7781-17

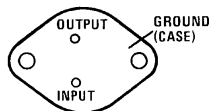
### Positive and Negative Regulator



TL/H/7781-18

## Connection Diagrams and Ordering Information

TO-3 Metal Can Package (K)



TL/H/7781-11

Bottom View

**Steel Package Order Numbers:**

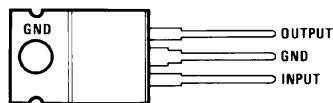
|             |           |           |
|-------------|-----------|-----------|
| LM140K-5.0  | LM140K-12 | LM140K-15 |
| LM340AK-5.0 | LM340K-12 | LM340K-15 |
| LM340K-5.0  |           |           |

See Package Number K02A

|                 |                |                |
|-----------------|----------------|----------------|
| LM140AK-5.0/883 | LM140AK-12/883 | LM140AK-15/883 |
| LM140K-5.0/883  | LM140K-12/883  | LM140K-15/883  |

See Package Number K02C

TO-220 Power Package (T)



TL/H/7781-12

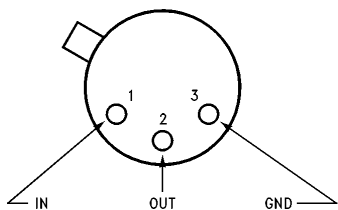
Top View

**Plastic Package Order Numbers:**

|             |            |
|-------------|------------|
| LM340AT-5.0 | LM340T-5.0 |
| LM340AT-12  | LM340T-12  |
| LM340AT-15  | LM340T-15  |
| LM7805CT    | LM7812CT   |
| LM7815CT    | LM7806CT   |
| LM7808CT    | LM7818CT   |
| LM7824CT    |            |

See Package Number T03B

TO-39 Metal Can Package (H)



TL/H/7781-19

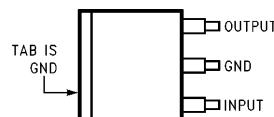
Top View

**Metal Can Order Numbers†:**

|                |                |
|----------------|----------------|
| LM140H-5.0/883 | LM140H-6.0/883 |
| LM140H-8.0/883 | LM140H-12/883  |
| LM140H-15/883  | LM140H-24/883  |

See Package Number H03A

TO-263 Surface-Mount Package (S)



TL/H/7781-20

Top View



TL/H/7781-21

Side View

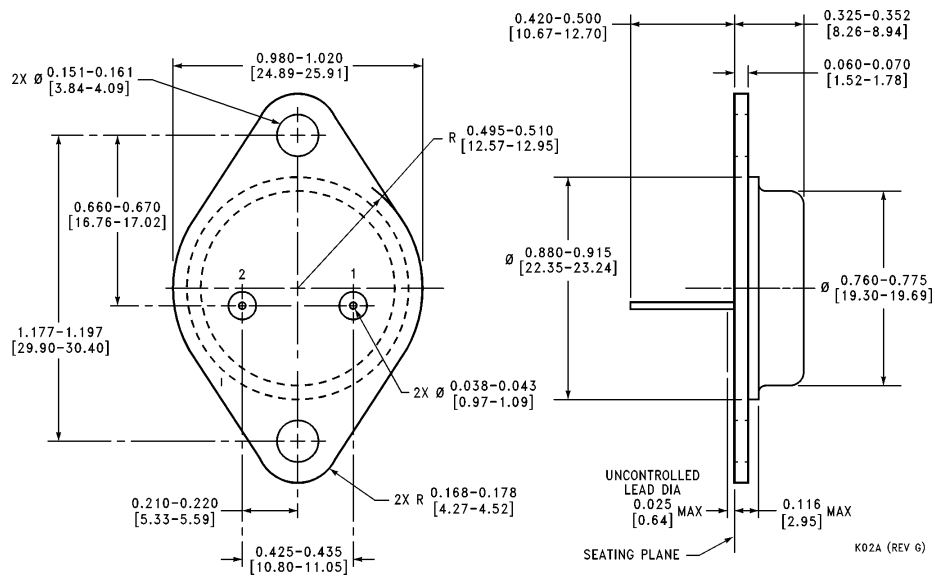
**Surface-Mount Package Order Numbers:**

|         |         |
|---------|---------|
| LM7805S | LM7812S |
|---------|---------|

See Package Number TS3B

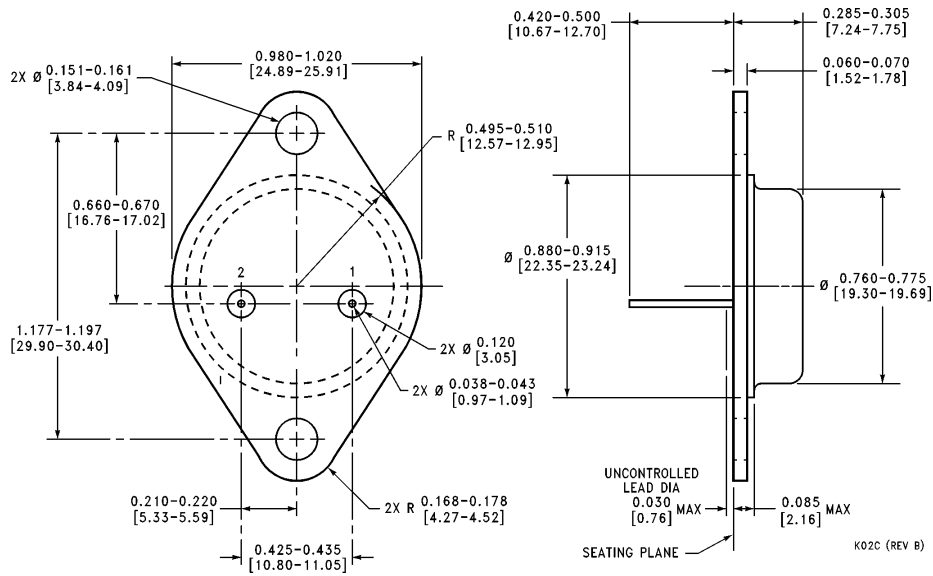
†The specifications for the LM140H/883 devices are not contained in this datasheet. If specifications for these devices are required, contact the National Semiconductor Sales Office/Distributors.

**Physical Dimensions** inches (millimeters)



**TO-3 Metal Can Package (K)**  
**Order Number LM340AK-5.0, LM140K-5.0, LM340K-5.0, LM140K-12, LM340K-12,**  
**LM140K-15, LM340K-15, LM7806CK, LM7808CK, LM7818CK or LM7824CK**  
**NS Package Number K02A**

**Physical Dimensions** inches (millimeters) (Continued)

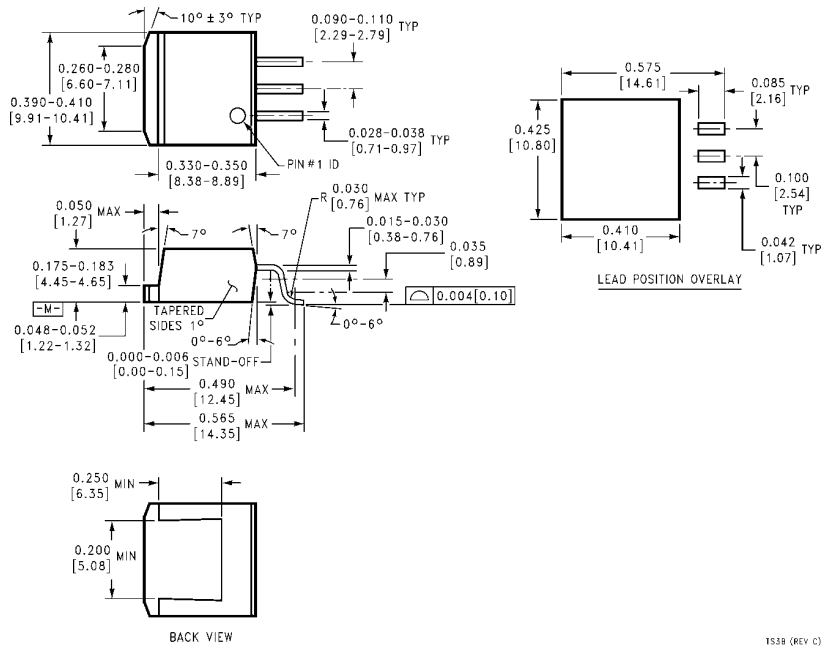


**TO-3 Metal Can Package (K)**

Mil-Aero Products

Order Number LM140AK-5.0/883, LM140K-5.0/883, LM140AK-12/883,  
LM140K-12/883, LM140AK-15/883 or LM140K-15/883

NS Package Number K02C

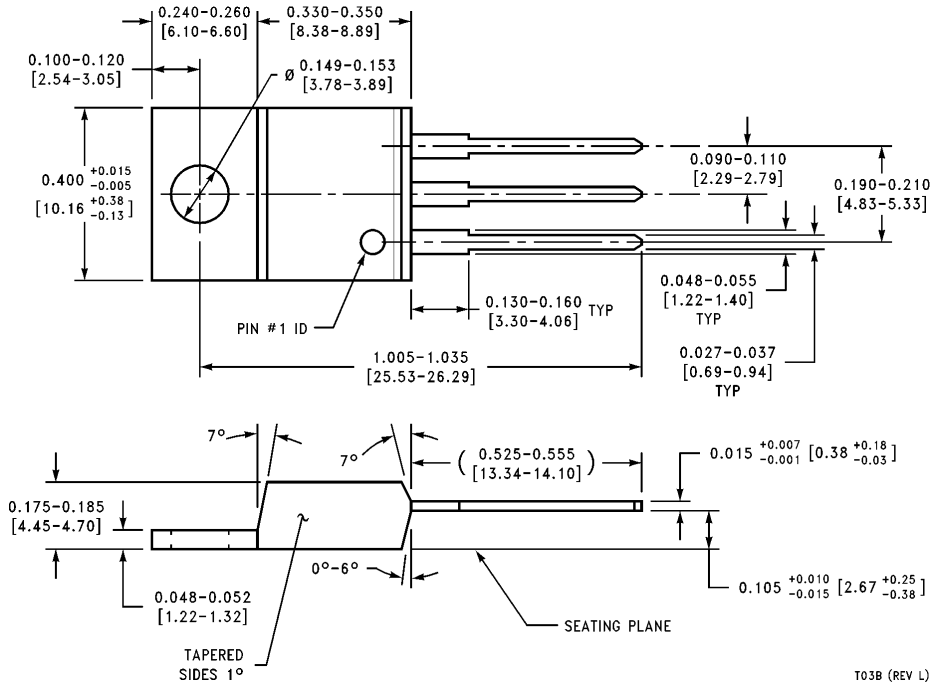


**TO-263 Surface-Mount Package (S)**

Order Number LM7805S or LM7812S

NS Package Number TS3B

**Physical Dimensions** inches (millimeters) (Continued)




**TO-220 Power Package (T)**  
**Order Number LM340AT/LM340T-5.0, LM340AT/LM340T-12, LM340AT/LM340T-15,**  
**LM7805CT, LM7812CT, LM7815CT, LM7806CT, LM7808CT, LM7818CT or LM7824CT**  
**NS Package Number T03B**

T03B (REV L)

**LIFE SUPPORT POLICY**

NATIONAL'S PRODUCTS ARE NOT AUTHORIZED FOR USE AS CRITICAL COMPONENTS IN LIFE SUPPORT DEVICES OR SYSTEMS WITHOUT THE EXPRESS WRITTEN APPROVAL OF THE PRESIDENT OF NATIONAL SEMICONDUCTOR CORPORATION. As used herein:

1. Life support devices or systems are devices or systems which, (a) are intended for surgical implant into the body, or (b) support or sustain life, and whose failure to perform, when properly used in accordance with instructions for use provided in the labeling, can be reasonably expected to result in a significant injury to the user.
2. A critical component is any component of a life support device or system whose failure to perform can be reasonably expected to cause the failure of the life support device or system, or to affect its safety or effectiveness.

|  |  |   |   |
|--|--|---|---|
|  <p><b>National Semiconductor Corporation</b><br/>         1111 West Bardin Road<br/>         Arlington, TX 76017<br/>         Tel: (800) 272-9959<br/>         Fax: (800) 737-7018</p> | <p><b>National Semiconductor Europe</b><br/>         Fax: (+49) 0-180-530 85 86<br/>         Email: cnjwge@tevm2.nsc.com<br/>         Deutsch Tel: (+49) 0-180-530 85 85<br/>         English Tel: (+49) 0-180-532 78 32<br/>         Français Tel: (+49) 0-180-532 93 58<br/>         Italiano Tel: (+49) 0-180-534 16 80</p> | <p><b>National Semiconductor Hong Kong Ltd.</b><br/>         19th Floor, Straight Block,<br/>         Ocean Centre, 5 Canton Rd.<br/>         Tsimshatsui, Kowloon<br/>         Hong Kong<br/>         Tel: (852) 2737-1600<br/>         Fax: (852) 2736-9960</p> | <p><b>National Semiconductor Japan Ltd.</b><br/>         Tel: 81-043-299-2309<br/>         Fax: 81-043-299-2408</p> |
|--|--|---|---|

National does not assume any responsibility for use of any circuitry described, no circuit patent licenses are implied and National reserves the right at any time without notice to change said circuitry and specifications.